

AGRICULTURE AND AGRO BUSINESS

INTRODUCTION

Agriculture is the major occupation and source of income for a larger portion of the people of Oyo State engaging in over 70% of the state's workforce. Oyo State has a population of 415,030 farm families (2007 Crop enumeration Exercise).

This is attributable to the fact that the state is endowed with varied but favorable climatic and ecological conditions, vast agricultural land mass estimated at about 28,000 sq km as well as soil structures that support the production of a range of fruits, vegetables, arable and tree crops.

The state has untapped and available arable land suitable for large-scale farming with a cultivable size of about 2,710,793 Ha.

CAPACITY

- Over 3,070 registered farmers' cooperative groups (as at 2007 enumeration exercise);
- Several medium scale commercial farm across the State
- Presence of several local and international manufacturers and distributors of agro-allied services/inputs
- Oyo State is home to the leading agricultural input fabricators and agro-processors in the country.

- Available supports from the FGN/ external: Accelerated agriculture development scheme (AADS), commercial agriculture credit scheme (CACs), Anchor borrowers' program (ABP), Trust fund model scheme (TFMS), Rural access and agricultural marketing program (RAAMP), Rural finance institution building program (RUFIN), Established policy framework document, Oyo state roadmap for Agricultural development 2019-2023.
- Other supports: bank of agriculture (BoA), Bank of industry (BoI), Central bank of Nigeria (CBN), (USAID), UKAID, UNICEF, World food production (WFP), united nations development program (UNDP), International development Agencies (IDA), food & Agriculture Organization (FAO), International monetary fund (IMF), etc.

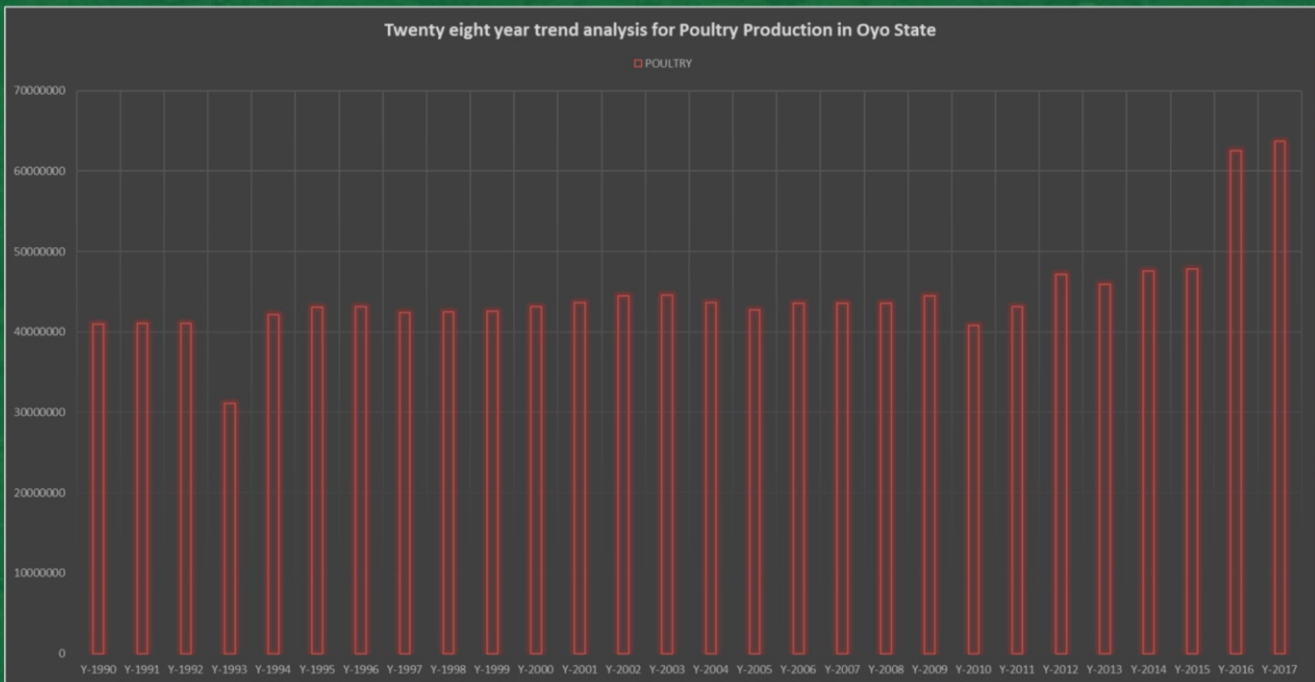


Figure showing the poultry population census in Oyo State from 1990 till 2017. The data suggests a gradual increase of 36% in the poultry population over 28 years with the current population (in 2017) exceeding 63 million birds.

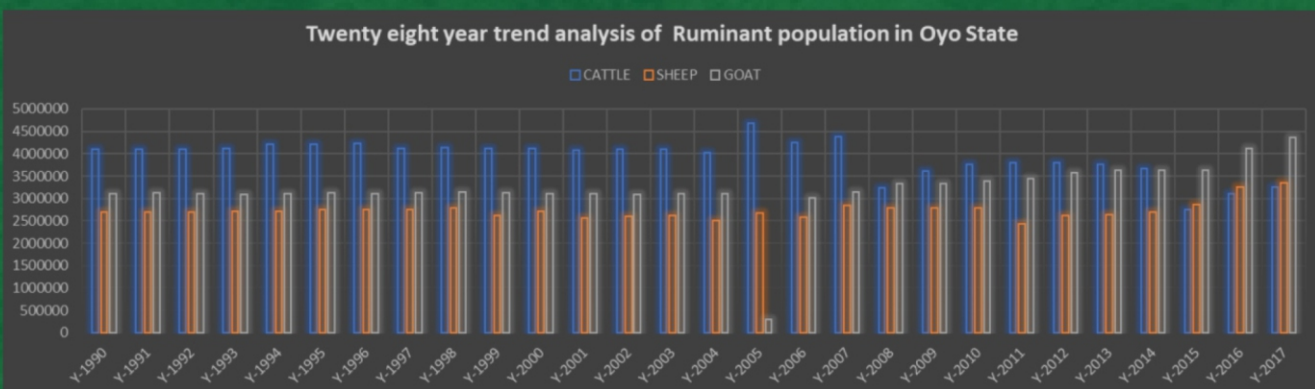


Figure showing the ruminant population census in Oyo State from 1990 till 2017. The data suggests a gradual increase of the goat population and decrease in cattle population over 28 years with the current population (in 2017) of goats reaching almost 4,500,000 goats and cattle dipping to 3,500,00 in 2017 from 4,000,000 in 1990.

**Pole Plantations on
1548 Ha of land
spread across 5 Local
Government
Areas**

- **23 Man Made Lakes
for Fisheries Production**
- **Total Lake Size In
3,265.96 Ha**

FOREST ZONES

**9 Forest Zones (Ijaiye Covering 2 Ecological Zones)
3 High Forest Covering (28,992Ha)
7 Savannah Forest (314,568ha)**

11

**State Farm
Settlements on
103,163ha
Supporting
1,808 Farmers**

17

**Dams Supporting
976,807 Farmers,
cultivating on
13,950 Ha
of Land**



Largest Producer of Cassava in Nigeria

STATE AGRO RESOURCE CENTRES/INSTITUTES

The State also has numerous agricultural institutions and related agencies positioned to work with willing investors to address research, advisory services and manpower needs. Some of these institutions include:

- Ministry of Agriculture, Natural Resources and Rural Development
- Oyo State Agriculture Development Programme (OYSADEP)
- International Institute for Tropical Agriculture (IITA)
- Forestry Research Institute of Nigeria (FRIN)
- Cocoa Research Institute of Nigeria (CRIN)
- Nigeria Institute for Horticulture Research and Training (NIHORT)
- University of Ibadan Faculties of Agriculture and Veterinary Medicine
- Ladoko Akintola University of Technology
- Oyo State College of Agriculture and Technology
- Raw Material Research and Development Council
- National Stored Products Research Institute

STATE OWNED AGRIC INFRASTRUCTURE

- 23 man-made lakes covering a total land size of 3,265.96 Ha for fisheries production
- 11 farm settlements on 103,163 Ha supporting 1,808 farmers
- 1,548 Ha of land spread across 5 Local Government Areas used as Pole Plantations
- The State has 30 dams with 17 of these supporting 976,807 farmers farming on 14,000 Ha of land
- 10,000mt capacity silo in Monatan, Ibadan (Federal Govt. Owned), 10,000mt capacity silo at Aawe road, Oyo (under construction)
- 1,000mt capacity warehouses each at four different locations (Saki, Ayete, Kisi, Iseyin) owned by the state and several corporate and individual owned across the state);
- 4 by 1,250mt capacity warehouse at Offa-meta, Oyo;
- 19 by 10mt capacity cribs across the farm settlements owned by the state;
- Nine (9) owned and run farms settlements across the state (see annexure-II For the list and distribution);

- 115 hectares state owned tree crops' pilot plantations and nurseries across the state;
- 1,200HA. Agriculture farm complex at Fashola (suitable for dairy/ beef feedlot programme)

NATURAL ENDOWMENTS

- Excellent agroecology, presumably one of the best in Nigeria
- Climate - Wet season (April-October); Dry Season (November-March)
 - Mean annual rainfall (1,194 mm in the North and 1,264 mm in the South)
 - Temperature: Annual Mean Minimum (22.9oC) Maximum (27oC)
 - Annual Mean relative humidity: 60% (at 1500GMT), 79% (at 0900GMT)
 - Annual Mean Cloud Coverage: 7 OKTAS (i.e. heights of the sky covered in cloud)
- 9 Forest Zones (Ijaiye covering 2 ecological zones)
 - 3 High Forests zones covering 22,992 Ha
 - 7 Savannah Forest zones 314,568 Ha
- 5,382.285 hectares state owned forest reserves, fuel wood and pole plantations

INVESTMENT OPPORTUNITIES

- Cassava value addition i.e. cassava to ethanol, flour, starch, e.t.c
- Large scale poultry processing
- Large scale industrialized cash crop and food crop farming
- Irrigation technology experts
- Post harvest storage, processing, packaging and export companies
- Value addition in fruits and vegetables for local consumption and export purposes
- Industrial aquaculture
- Dairy farming and Beef feedlots
- Fruit juice processing
- Cashew nut processing

